



Swanbuild

# BRONWOOD 8

INTERNAL 73.2M<sup>2</sup>

BUILDING  
HOMES SINCE  
1975



## FEATURES

Indoor Size (m <sup>2</sup> )	<b>73.2</b>
Number of Bathrooms	<b>1</b>
Number of Bedrooms	<b>2</b>
Number of Living Zones	<b>1</b>
Home Style	<b>Downsize or Holiday Home</b>

The Bronwood 8 is perfect for those looking to downsize or for a holiday home to escape to. A compact home doesn't mean compromising on lifestyle!

This design offers a comfortable, relaxed environment, and with two bedrooms, each with their own robe and built-in storage unit you won't be short on storage space.

The open plan kitchen and dining area are adjacent to a generous-sized living room, providing plenty of space for you and any visitors. The raked ceilings help to enhance this central hub by giving a bright and airy feel.

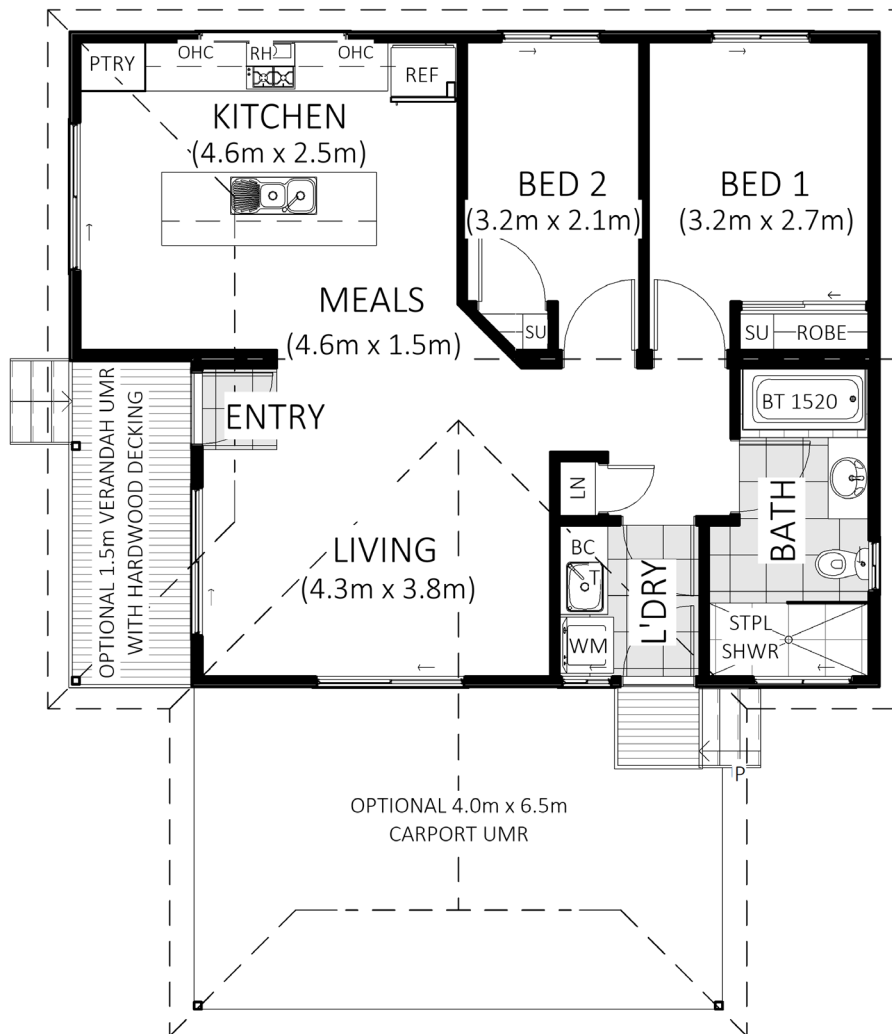
The standard home design offers a bathroom with room for both a full-sized tub and a separate shower, a laundry room and a conveniently located linen robe nearby.

A front deck provides a covered entryway into the home.

Customise the Bronwood 8 home to suit your needs and lifestyle – popular choices include adding bay windows to the kitchen area, and an optional carport, which provides an additional under cover entry into the home.



*This floor plan is available when selecting any of the 3 Inclusions Packages.*



**From traditional country to modern living, we offer a simplified process and genuine care, creating homes that have your lifestyle at their heart.**

At Svanbuild, we want to ensure your experience of building a new modular home is an exciting and rewarding process from start to finish. We offer a large range of floor plans and 3 inclusions packages to suit your lifestyle. Whether you're after a budget friendly first home, or a forever home packed full of premium inclusions, we'll help you get exactly what you need.

#### **TAILORED UPGRADE OPTIONS\* INCLUDE:**

- Carport or garage
- Ducted reverse cycle air-conditioning
- Downlights
- Fireplace
- Feature painted walls
- Extra WC in laundry
- 2pac Laminex profile doors
- Verandah/alfresco
- Feature glass entry door
- Architectural facade

Speak to our friendly sales team about designing and building your new Svanbuild home today.



**1800 008 024**



**SALES@SWANBUILD.COM.AU**

\*Tailored upgrades may incur additional costs and are only available when selecting a Life Made or Sustainable Living Package.