



FEATURES PER HOME

Indoor Size (m ²)	76.2
Number of Bathrooms	1
Number of Bedrooms	2
Number of Living Zones	1
Home Style	Dual Occupancy



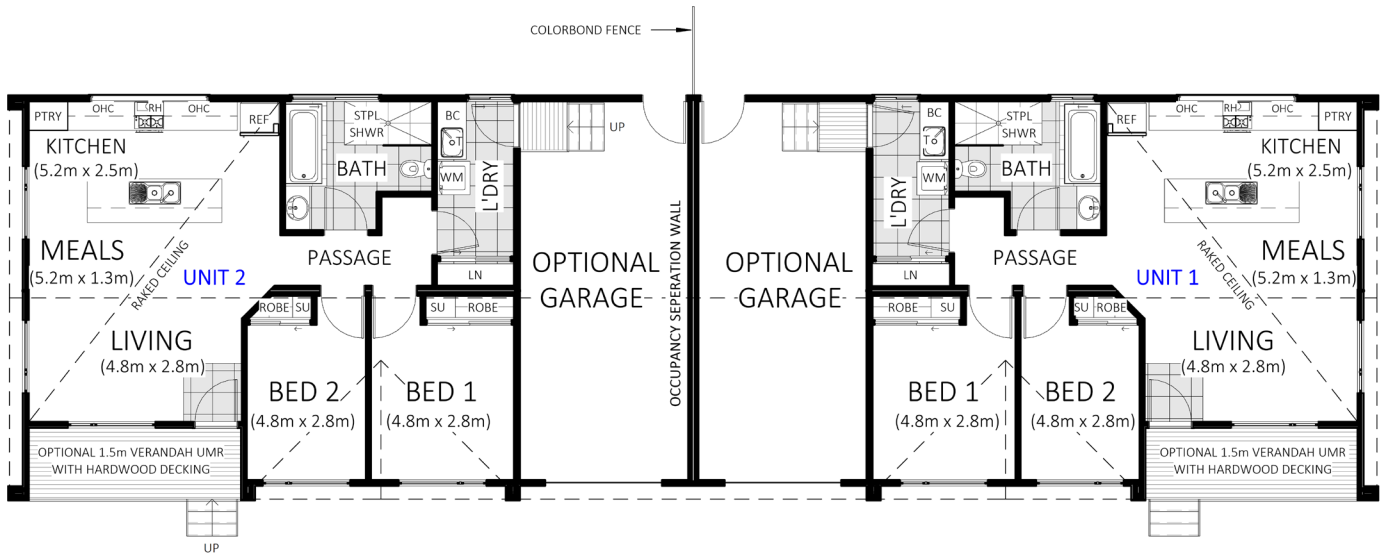
This floor plan is available when selecting any of the 3 Inclusions Packages.

The Chippendale 8 brings the best of modern living to a flexible dual occupancy design. A compact single-storey floor plan that includes all the essentials you would expect in a new home.

The open plan kitchen and meals area leads to the home's two bedrooms; the second bedroom would be ideal for a nursery or a guest room when friends and family come to stay. The low maintenance footprint of each home in the Chippendale 8 includes a full-sized laundry with ample storage and access to the home's garage as well as a family bathroom with a stepless shower and full-sized bathtub.

A large window in the living room overlooks the outdoor verandah, allowing plenty of natural light into the main living area.

We have designed the Chippendale 8 for homeowners who prefer to spend time enjoying their home, rather than having to maintain it.



Swanbuild Dual Occupancy homes are ideal for owner-occupiers, creating a multi-generational home or building an investment opportunity.

At Swanbuild, we want to ensure your experience of building a new modular home is an exciting and rewarding process from start to finish. We offer a large range of floor plans and 3 inclusions packages to suit your lifestyle. Whether you're after a budget friendly first home, or a forever home packed full of premium inclusions, we'll help you get exactly what you need.

TAILORED UPGRADE OPTIONS* INCLUDE:

- Ducted reverse cycle air-conditioning
- Downlights
- Fireplace
- Feature painted walls
- Extra WC in laundry
- 2pac Laminex profile doors
- Verandah/alfresco
- Feature glass entry door
- Architectural facade

Speak to our friendly sales team about designing and building your new Swanbuild home today.



1800 008 024



SALES@SWANBUILD.COM.AU

*Tailored upgrades may incur additional costs and are only available when selecting a Life Made or Sustainable Living Package.