

OXLEY 22

INTERNAL 201.8M²

BUILDING
HOMES SINCE
1975



The spacious Oxley 22 floor plan provides the perfect backdrop for both interior and outdoor living and entertaining.

The first floor offers a convenient entryway and an open plan space between the living and kitchen/dining area, allowing you to stay close to friends and family while entertaining. Two of the four bedrooms in the home reside on the first floor, with the well-appointed master bedroom offering plenty of room for rest and rejuvenation.

The second floor of this beautiful design includes two additional bedrooms, complete with their own built-in wardrobes. A bathroom upstairs brings the total number of bathrooms in the home to three, meaning getting ready in the morning is a breeze for every member of the home. Upstairs there is also a generously sized rumpus area where children can play or guests can have some privacy.

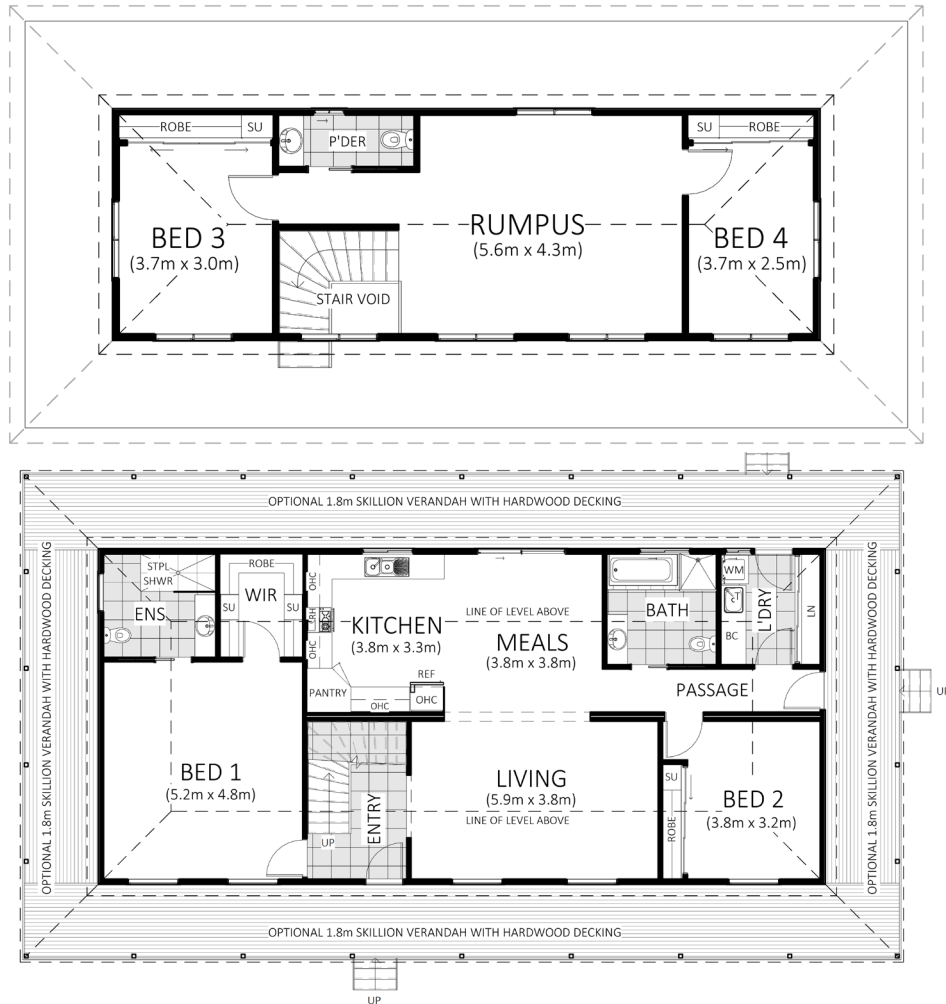
Outside the home, not just one, but two verandahs span the entire length of the home, offering the perfect spots for entertaining or just relaxing outdoors while sipping a cool drink.

FEATURES

Indoor Size (m ²)	201.8
Number of Bathrooms	3
Number of Bedrooms	4
Number of Living Zones	2
Home Style	Country



This floor plan is available when selecting a Life Made & Sustainable Living Package.



From traditional country to modern living, we offer a simplified process and genuine care, creating homes that have your lifestyle at their heart.

At Swanbuild, we want to ensure your experience of building a new modular home is an exciting and rewarding process from start to finish. We offer a large range of floor plans and 3 inclusions packages to suit your lifestyle. Whether you're after a budget friendly first home, or a forever home packed full of premium inclusions, we'll help you get exactly what you need.

TAILORED UPGRADE OPTIONS* INCLUDE:

- Carport or garage
- Ducted reverse cycle air-conditioning
- Downlights
- Fireplace
- Feature painted walls
- Extra WC in laundry
- 2pac Laminex profile doors
- Verandah/alfresco
- Feature glass entry door
- Architectural facade

Speak to our friendly sales team about designing and building your new Swanbuild home today.



1800 008 024



SALES@SWANBUILD.COM.AU

*Tailored upgrades may incur additional costs and are only available when selecting a Life Made or Sustainable Living Package.