

# BLACKWOOD 12

INTERNAL 115.1M<sup>2</sup>

BUILDING  
HOMES SINCE  
**1975**



The Blackwood 12 is elegant yet welcoming with its large optional front and side verandah to greet you when you arrive home. It's a classic country home designed for the Australian way of living.

The open plan living area features a large kitchen, dining and living area with an impressive raked ceiling to create an airy, comfortable space from which you can enjoy the outlook.

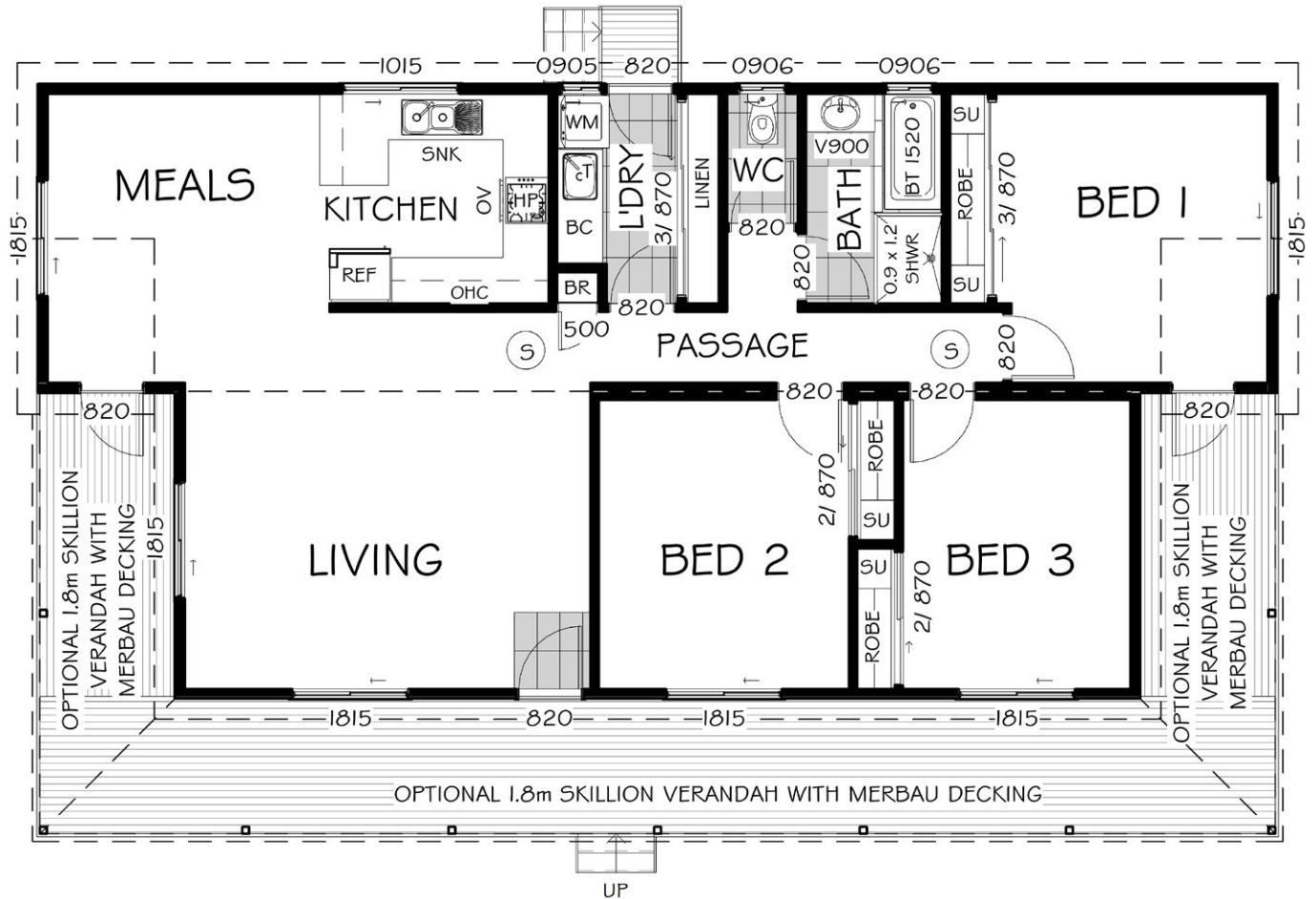
The home has a well sized master bedroom with built-in robe and the option of a French door opening onto the (optional) verandah. The two other spacious bedrooms have built-in robes incorporated with a growing family in mind.

**Check out our list of inclusions as standard – we think you will be pleasantly surprised.**

## FEATURES

Indoor Size (m <sup>2</sup> )	<b>115.1</b>
Number of Bathrooms	<b>1</b>
Number of Bedrooms	<b>3</b>
Number of Living Zones	<b>1</b>
Home Style	<b>Country</b>

# BLACKWOOD 12



Swanbuild is your custom country and contemporary home expert. Flexible in design, exceptional customer service and rapid quality-controlled construction.

At Swanbuild we understand that there is no 'one size fits all', yet to totally design a custom home from scratch is time consuming, requires vast experience and can be a daunting task. With over 35 years' experience in the building industry, we've refined a construction system that is completely unique compared to that of project homes, kit homes and onsite building.

## AVAILABLE CUSTOMISATIONS TO OUR HOMES\*

- Amended floorplan
- Carport or garage
- Ducted reverse cycle air-conditioning
- Downlights
- Fireplace
- Feature painted walls
- Extra WC in laundry
- 2pac Laminex profile doors
- Custom designed verandah/alfresco
- Feature glass entry door
- Architectural facade
- Increased natural light

Speak to our friendly sales team about designing and building your dream Swanbuild home today.



1800 008 024



SALES@SWANBUILD.COM.AU

\*customisations may incur additional costs